

# V1182-3617 Series

## HD 6MP and 8MP IR 1/1.8" Zoom Lenses w/DC Iris

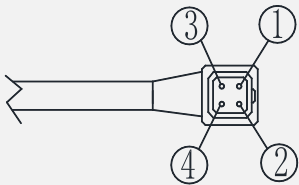
**Infinova**<sup>®</sup>  
The Integrator's Manufacturer



- **6.0, 8.0Mpx**
- **DC-Iris**
- **3.6~17 mm effective focal length, for many applications**
- **CS Mount**
- **1/1.8" Format**
- **IR-Correction**
- **Operating temperature ranges from -20°C to +60°C**
- **Compact structure, easy to install**

Infinova's V1182-3617 Series HD IR 1/1.8" Zoom Lens which features aperture of F1.5 and effective focal length of 3.6-17mm is of many kinds of applications. It is able to work under the condition of -20°C~+60°C and has the function of IR correction. Besides, its compact structure makes it easier to install.

## Technical specifications

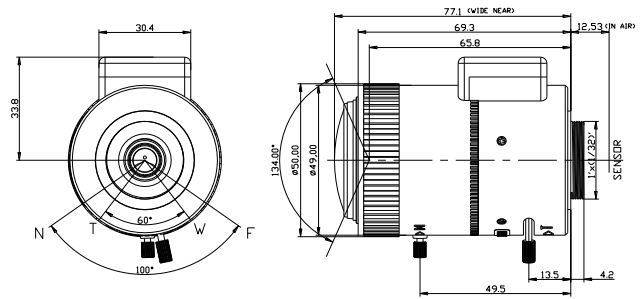
Effective Focal Length (E.F.L.)	3.6~ 17 mm
Aperture (F/#)	F1.5
Horizontal View Angle	V1182-3617-C6R: 134°~32°; V1182-3617-C8R: 129°~31°
Image Format	1/1.8"(max)
Iris Type	DC-Iris
Mount Type	CS
Minimum Object Distance(M.O.D)	0.3m
Optical Distortion	-15% (wide)
Chief Ray Angle (Max)	<10°
Control Type	Zoom: manual Focus: manual
Operating temperature	-4°F~140°F (-20°C ~+60°C)
Weight	0.27lbs±0.01lb (123g ±4g)
Tolerance(mm)	0 ~ 10: ±0.05; 10 ~ 30: ±0.10; 30 ~ 120: ±0.20; Angle: ±2°
<b>DC-Iris</b>	
	1: Damping(-); 2: Damping(+); 3: Driving(+); 4: Driving(-)
Connector	Square 4 pin: JEITA Standard; Cable Length: 250mm
DC Motor	Driving Coil: 190Ω at 20°C; Damping Coil: 560Ω at 20°C; Storage Temperature: -20 ~ 60°C
Operating	Voltage (Open): 3.5 ~ 5V; Voltage (Close): <0.5V

## Ordering information

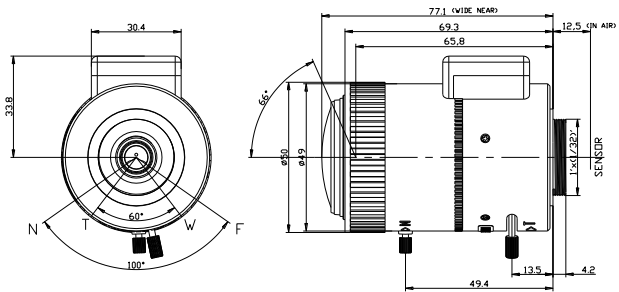
V1182-3617-C6R	Lens, HD 6MP, 1/1.8 inch, f=3.6~17mm, F1.5, DC- Iris, CS, IR
V1182-3617-C8R	Lens, HD 8.0MP, 1/1.8 inch, f=3.6~17mm, F1.5, DC- Iris, CS, IR

## Dimensions

### V1182-3617-C6R:



### V1182-3617-C8R:



(Unit: mm)